



CaseStudy




Astec
Precision
Engineering
www.astecprecision.com



SolidCAM UK Helps Astec Precision Engineering Unlock Full Potential of Their Powerful Sliding Head Lathes.

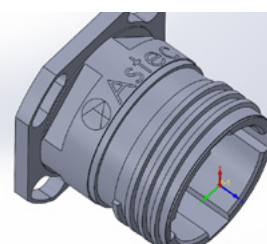
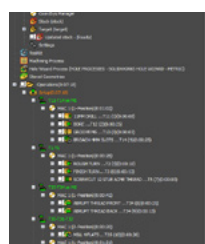
When Astec Precision took delivery of their Star SX38 Sliding Head lathe, they knew they had invested in a machine capable of serious performance. With its multi-axis flexibility, speed, and rigidity, the SX38 was designed to take on complex components with demanding tolerances.

With over two decades of excellence in providing CNC Machining Services, Astec Precision specialise in crafting precision-engineered parts and setting industry standards. Their commitment goes beyond, driven by cutting-edge technology, skilled professionals and unwavering dedication to their customers' success. The trusted company with the slogan "Small Things Made Better", recognised that simply owning a powerful machine wasn't enough.

To truly maximise Astec's 28 Sliding Head machines and to keep pace with growing customer demands for tighter tolerances, higher throughput, and more complex part geometries, they needed a CAM platform that could match the ambition of their machining strategy. Astec has built a strong reputation for delivering high-accuracy components across industries where precision is non-negotiable. For Astec Precision, the answer was already embedded within their workshop: **SolidCAM**.

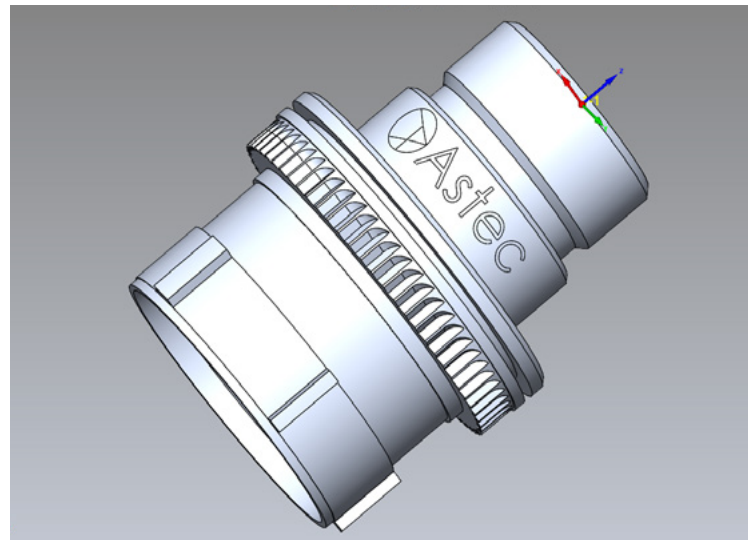
Running multi-axis movements, synchronising sub-spindles, and programming intricate milling operations all introduce opportunities for inefficiencies, inconsistencies, or downtime. To maintain competitive lead times and machining reliability, Astec needed a CAM system that could give them: optimised toolpaths, greater operational stability, and intelligent control over Simultaneous movements.

"By integrating SolidCAM into our manufacturing workflow, we've unlocked the full performance potential of our Sliding Head machines. SolidCAM's advanced manufacturing technology allows us to run optimised high efficiency toolpaths that maximise metal removal rates while maintaining exceptional process stability." **Richard Hogg, Manufacturing Lead, Astec Precision.**



Richard Hogg continues, "With enhanced control over multi-axis movements, sub-spindle synchronisation, and complex milling operations, SolidCAM enables faster cycle times and higher part consistency. This powerful combination expands our overall machining capability, allowing us to deliver more complex geometries, tighter tolerances, and higher throughput with complete confidence."

SolidCAM provides the critical tools Astec Precision need, with Synchronisation tools ensuring timing accuracy and eliminated unnecessary pauses or risky overlaps, and full Machine Simulation giving them the clarity and assurance needed to run aggressive cycles without compromising safety.



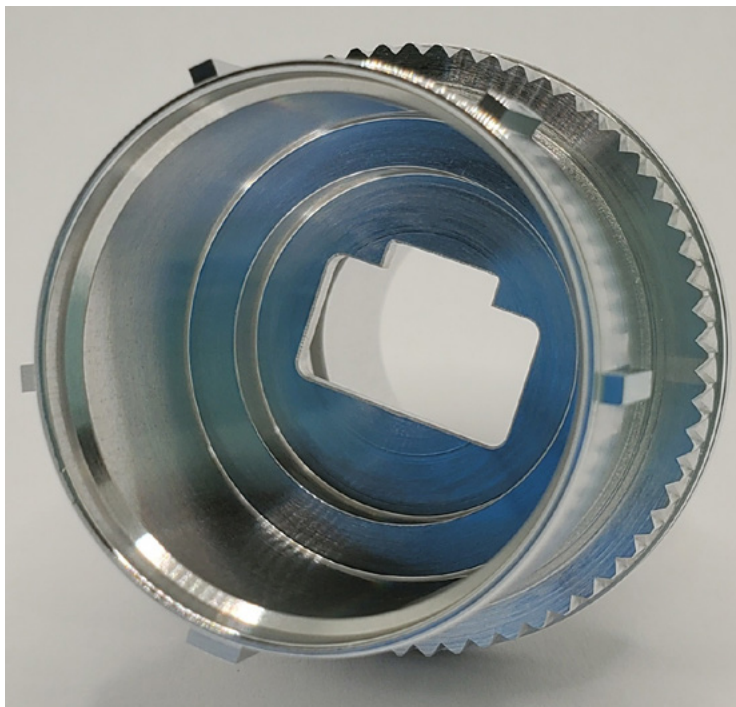
What began as a pursuit of incremental improvement in an already thriving company, has become a major step forward for their Advanced Sliding Head machining.

SolidCAM continues to support Astec's evolving ambitions.

"SolidCAM doesn't just improve performance - it transforms our Sliding Head manufacturing to a new level of productivity, precision and efficiency," concludes Richard Hogg.

For further information on Astec Precision and their full range of machining services, please visit: www.astecprecision.com.

For more information on SolidCAM's advanced CAM solutions, including Mill-Turn, and Sliding Head (Swiss-Type) technologies, please contact SolidCAM UK.



Astec Precision is capable of machining challenging components, running more efficient batch cycles, and achieving higher material-removal rates, all while maintaining the accuracy their customers depend on.

